

## Calperum OzFlux site – Calperum-Chowilla Supersite





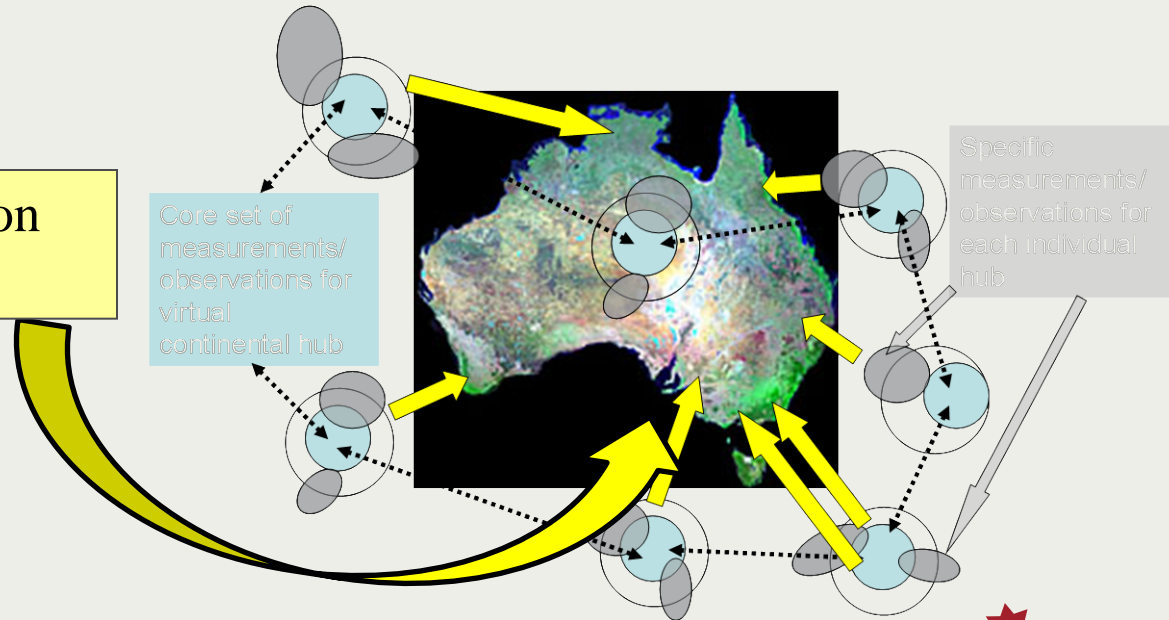
## Connecting SA's ecosystem measures into the national network

**Wayne Meyer**

Professor, Natural Resource Science

Wayne.meyer@adelaide.edu.au

Lower Murray Chowilla region  
measurement supersite





## Why Calperum - Chowilla?

- Typical southern Australian Eucalypt vegetation association on sandy calcareous soils
- Has value as stand alone site to complement national coverage of quantifying terrestrial fluxes
- Increased value as co-investment makes linkage into the MDB icon site of Chowilla floodplains
- Research questions:
  - Quantification of energy, carbon, water and nutrient fluxes?
  - Size and value of interdependence and exchange between rain dependant, floodplain and river ecosystems?
  - Rate and size of ecosystem response to management – grazing, revegetation, flooding, flow regimes ?





## People

- Wayne Meyer (UA)
- David Chittleborough (UA)
- Tim Lubcke
- Peter Cale and Grant Whiteman (Aust. Landscape Trust)
- Regional NRM Board (Hugo Hopton)
- SA Govt. agencies ( DENR and DfW)

With changes in water, land and biodiversity management, is it possible to restore and maintain ecosystem services and if so, with what compromises and at what cost?



SA

NSW

Mallee

Floodplain

River

Renmark

Vic





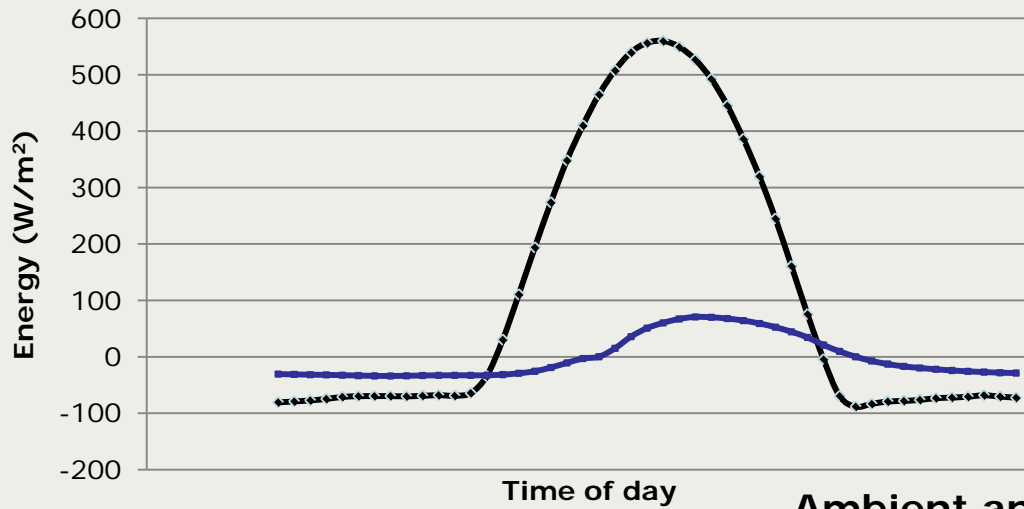




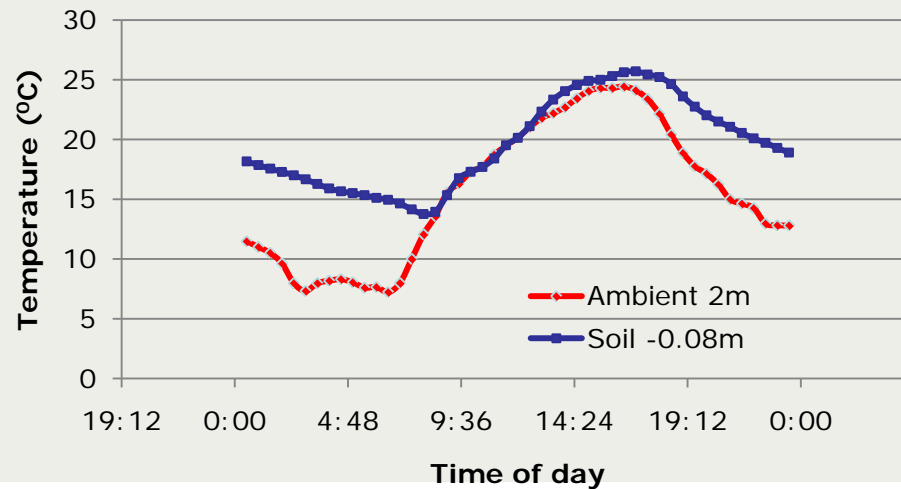




### Net radiant energy and ground heat flux 4 April 2011

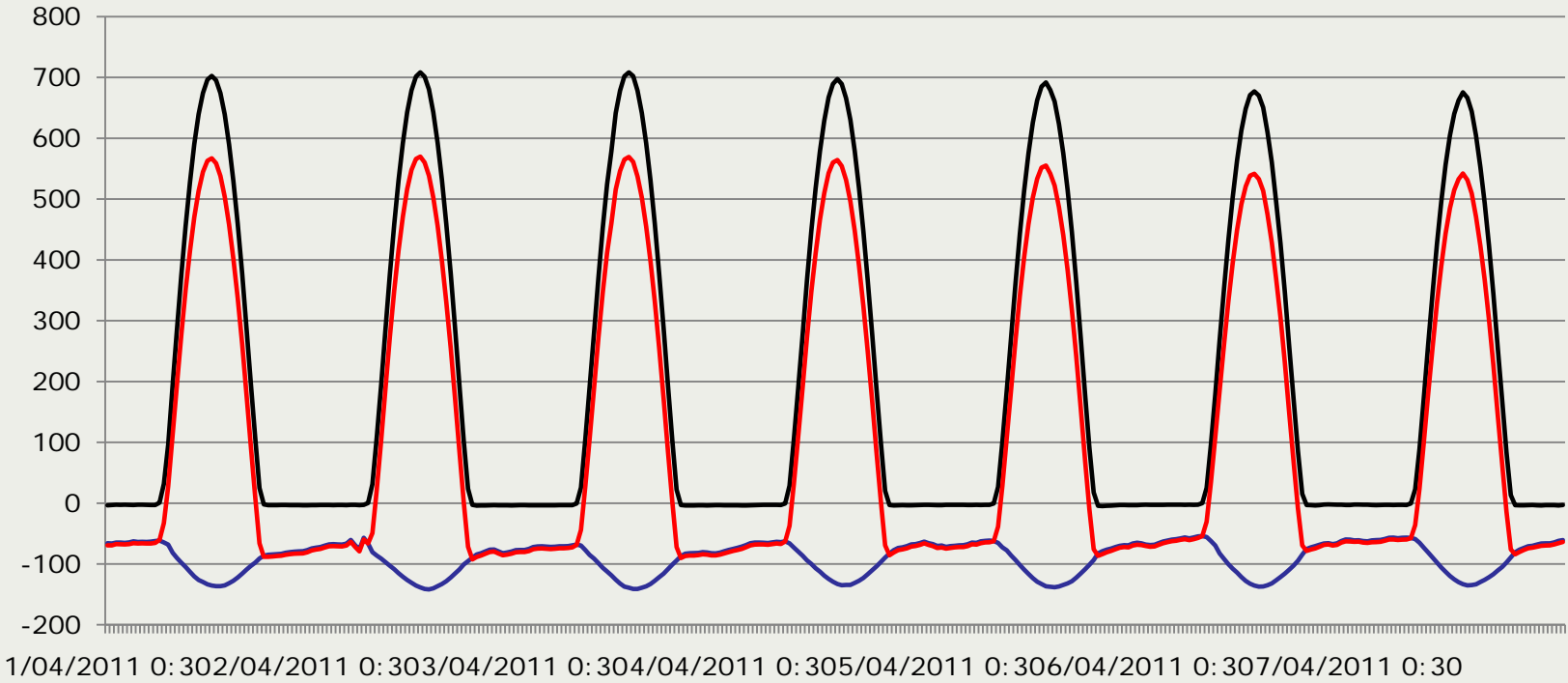


### Ambient and soil temperature 4 April 2011



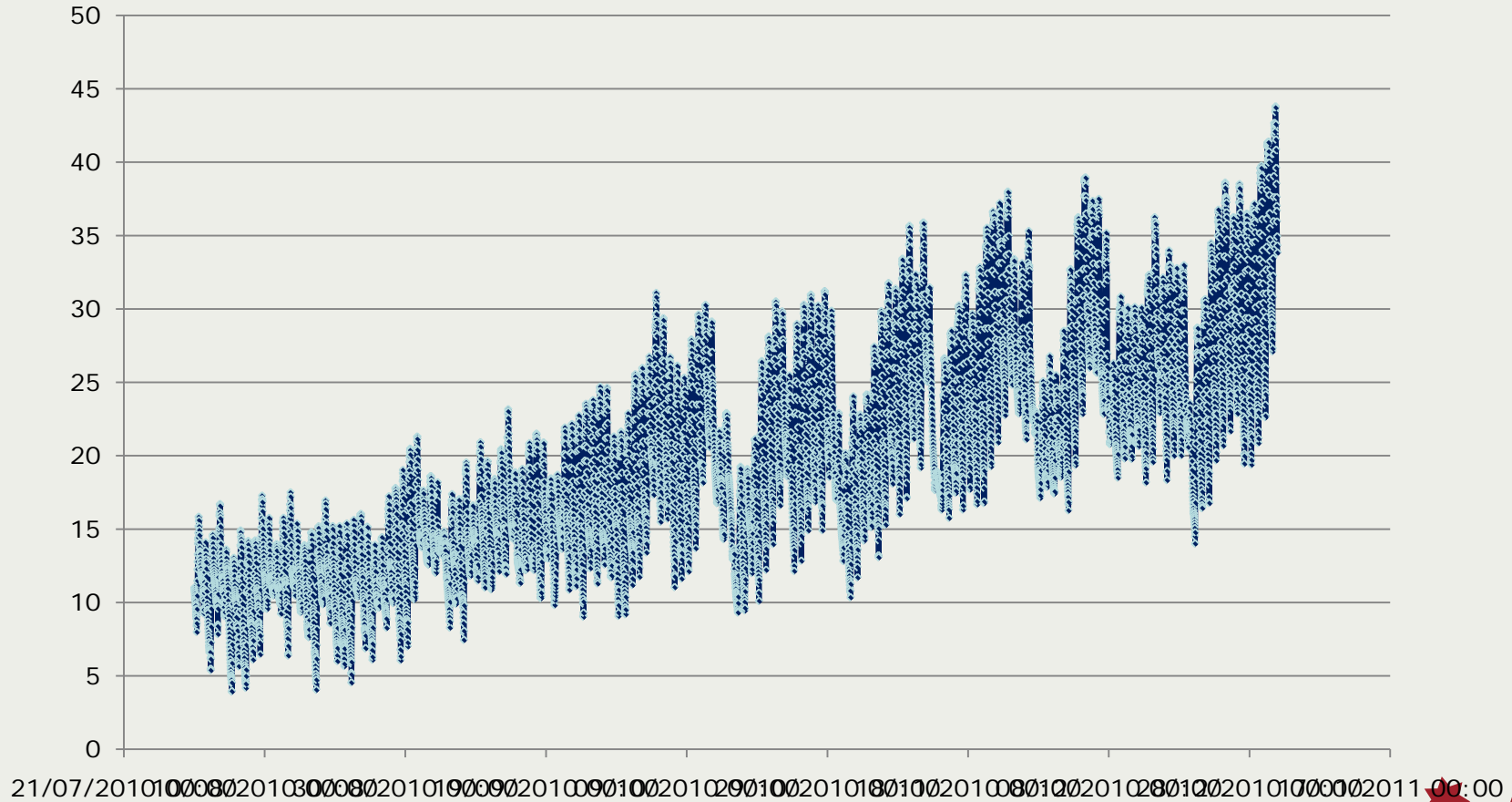


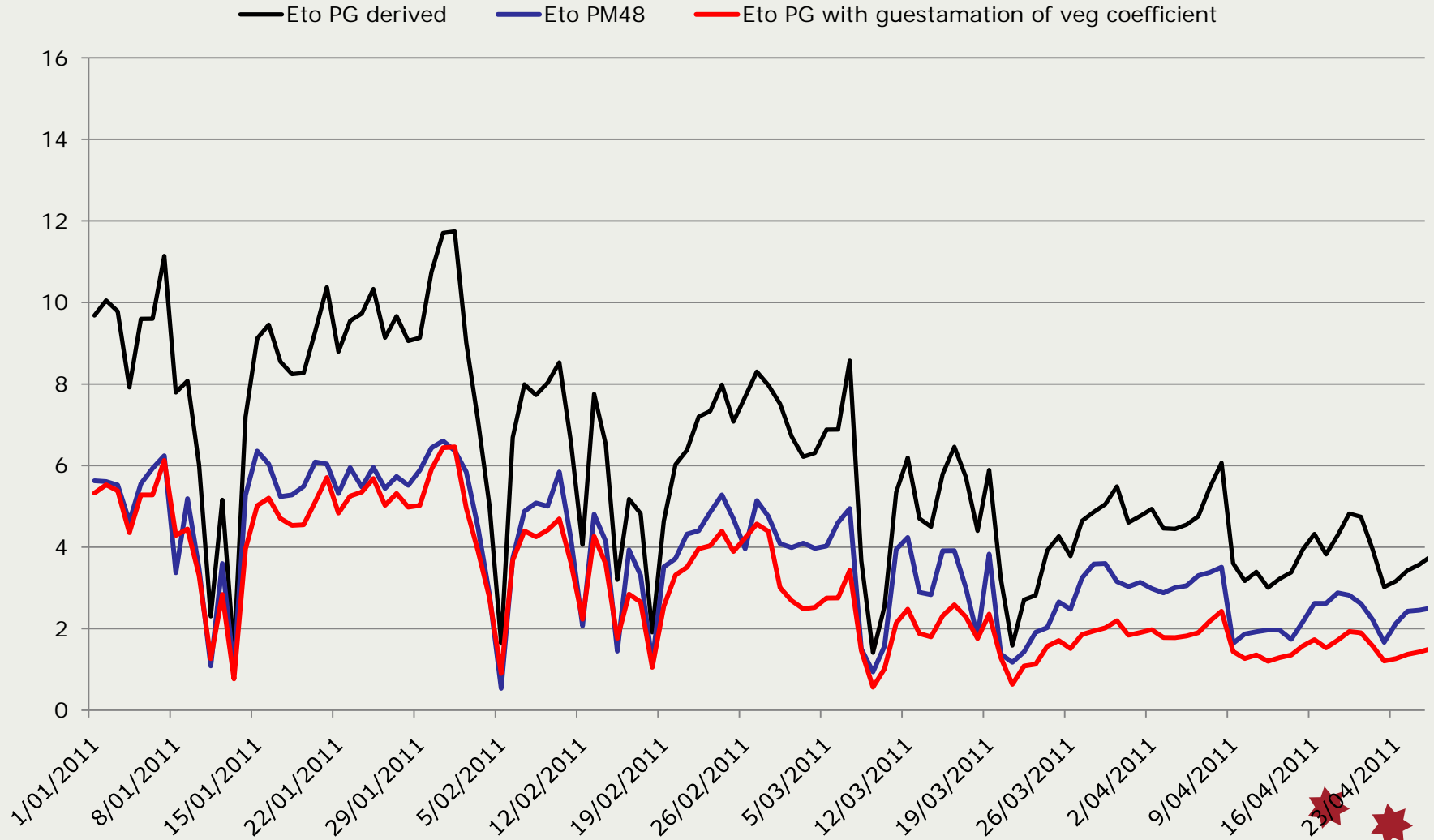
— Net SRad    — Net LRad    — NET Tot





# Soil Temperature

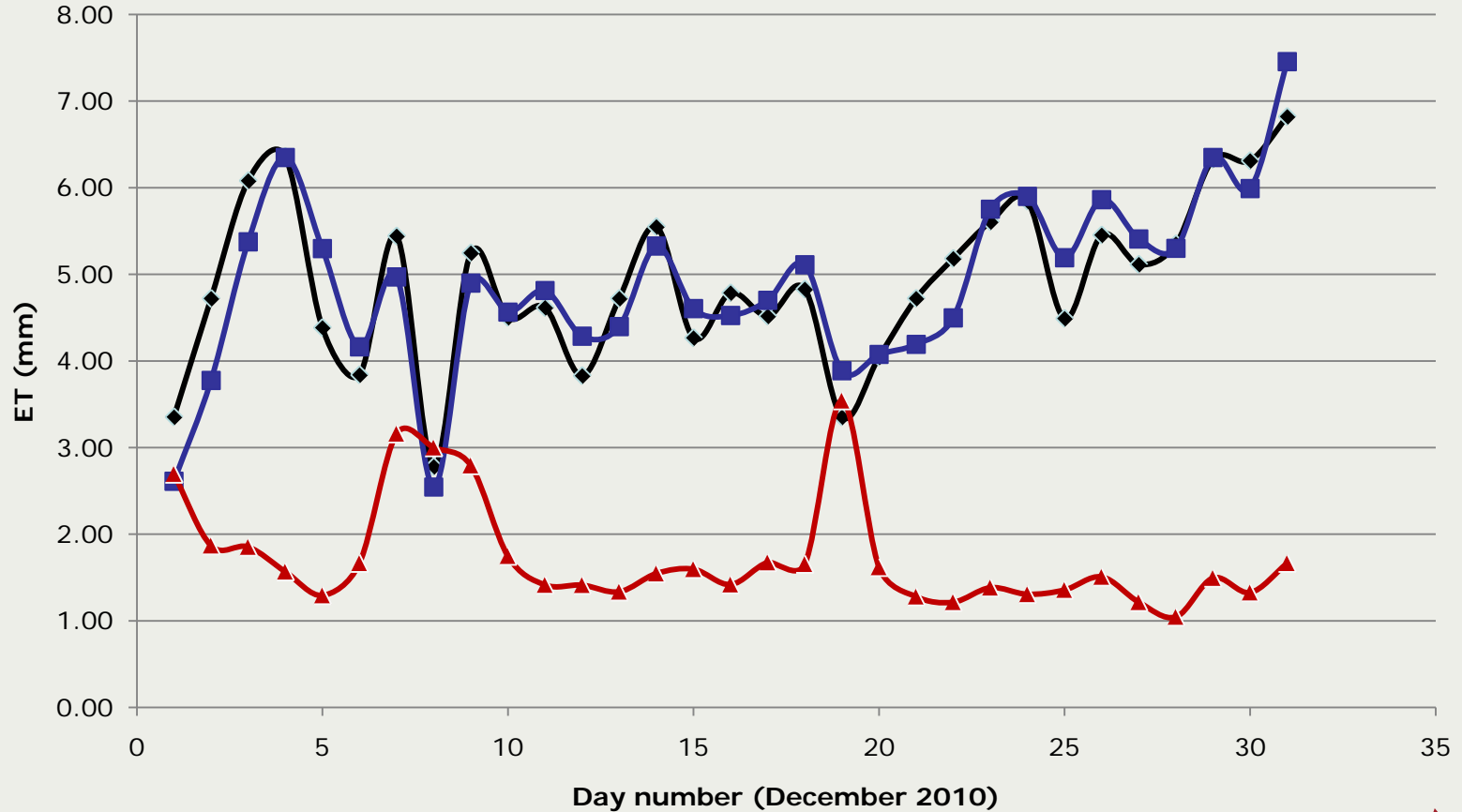






### Daily ET comparison

—◆— PM 48    —■— PG with Kv    —▲— EC





# Energy closure

